

**dimension** 700,23 mq  
**budget** 570.000 euro  
**project** 2006  
**completed** 2006-2007

## pavilion for disabled persons vicenza



### description

detailed proposal, final proposal and building site supervision pavilion for disabled persons in collaboration with Nicola Busato office Vicenza

### client

Provincia di Vicenza

### awards and publications

almanacco di casabella architetti italiani 2007,

Mondadori, Milano, 2007

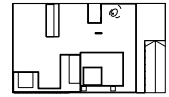
1000 X european architecture,

Verlagshaubraun, Berlino, 2007

Wonderland Travelogue, Springer, Vienna New York, 2006

The Provincial Administration of Vicenza is the promoter of a project for the creation of a welcoming home for people with disabilities on land it owns along via dell'Ospedaletto in Bertolina locations in Vicenza . "We'd like you to think of a home for our children." From this phrase came the project for the construction of a residential building for a small housing community of disabled children with a maximum of 10 guests. The normative aspect was, when the design was ongoing, only the background on which to develop the reasoning that aims rather to define the innovative principles of the building housing responsive to guests and consistent with their needs. The routes, the continuity or discontinuity between the spaces , the relationship between inside and outside, have assumed that, in the evolution of the project, the same importance and have been designed with as much care of the special equipment of the rooms or bathrooms. The building, a 3 patios pavilion, identifies a type that can be replicated in different contexts. The decisive choice has been to develop the building on one level , raising it to 100 cm from the ground level , thus restoring the correct point of view , compared to the surrounding environment , for anyone who spends much of his time sitting and you have to move using a wheelchair ; consistent with this choice it was decided to replace the traditional openings with glass walls that provide the living area is a direct relationship with the outside world and instead are "protected" by the presence of the patios and special shielding in the area night . The patios, as well as mediate the relationship between inside and outside of most of the rooms, and offer a safe area in case of fire, organize small indoor gardens, easily accessible where, if necessary, you can find a moment of intimacy or establish a direct relationship with the natural elements which may be water, grass or plants .





piano q. +0,50

- L1 aula 1
- L2 aula 2
- L3 aula 3
- L4 aula 4
- L5 aula 5
- L6 aula 6
- L7 aula 7
- L8 aula 8
- L9 aula 9
- L10 aula 10
- L11 aula 11
- L12 aula 12
- L13 aula 13
- L14 aula 14
- L15 aula 15
- L16 aula 16
- L17 aula 17
- L18 aula 18
- L19 aula 19
- L20 aula 20
- L21 aula 21
- L22 aula 22
- L23 aula 23
- L24 aula 24
- L25 aula 25
- L26 aula 26
- L27 aula 27
- L28 aula 28
- L29 aula 29
- L30 aula 30
- L31 aula 31
- L32 aula 32
- L33 aula 33
- L34 aula 34
- L35 aula 35
- L36 aula 36
- L37 aula 37
- L38 aula 38
- L39 aula 39
- L40 aula 40
- L41 aula 41
- L42 aula 42
- L43 aula 43
- L44 aula 44
- L45 aula 45
- L46 aula 46
- L47 aula 47
- L48 aula 48
- L49 aula 49
- L50 aula 50
- L51 aula 51
- L52 aula 52
- L53 aula 53
- L54 aula 54
- L55 aula 55
- L56 aula 56
- L57 aula 57
- L58 aula 58
- L59 aula 59
- L60 aula 60
- L61 aula 61
- L62 aula 62
- L63 aula 63
- L64 aula 64
- L65 aula 65
- L66 aula 66
- L67 aula 67
- L68 aula 68
- L69 aula 69
- L70 aula 70
- L71 aula 71
- L72 aula 72
- L73 aula 73
- L74 aula 74
- L75 aula 75
- L76 aula 76
- L77 aula 77
- L78 aula 78
- L79 aula 79
- L80 aula 80
- L81 aula 81
- L82 aula 82
- L83 aula 83
- L84 aula 84
- L85 aula 85
- L86 aula 86
- L87 aula 87
- L88 aula 88
- L89 aula 89
- L90 aula 90
- L91 aula 91
- L92 aula 92
- L93 aula 93
- L94 aula 94
- L95 aula 95
- L96 aula 96
- L97 aula 97
- L98 aula 98
- L99 aula 99
- L100 aula 100

nord

