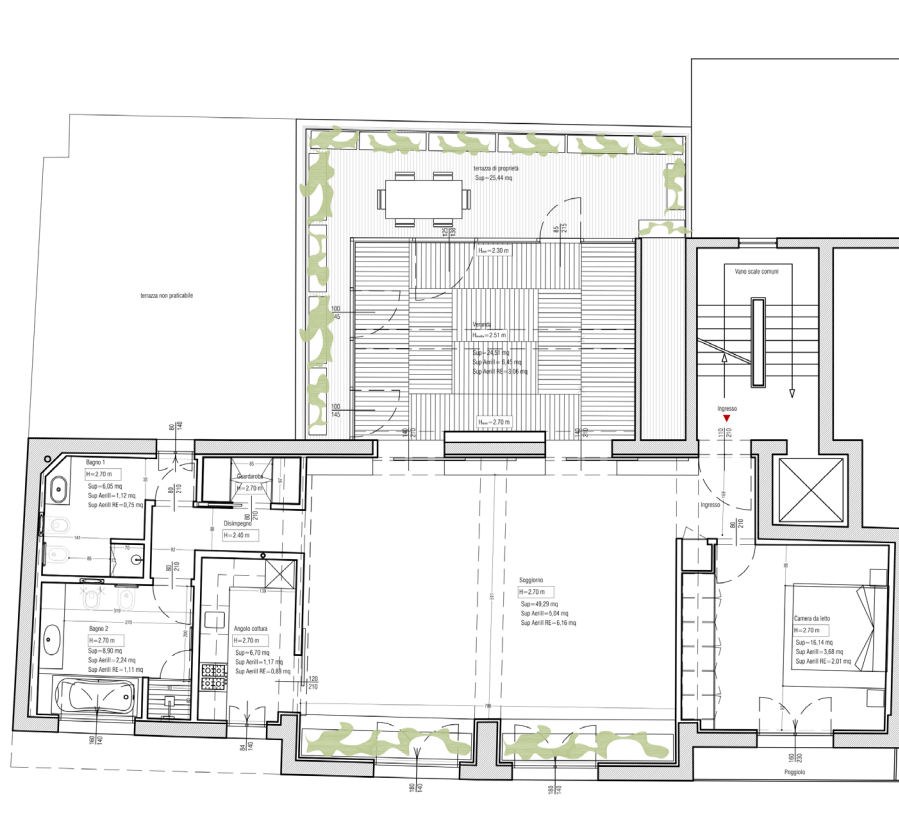


dimension 115 mq  
project 2015  
completed 2015-2016

C house mestre



#### description

feasibility study, final design and supervision of works  
for the redevelopment of a flat in Mestre

#### client

private

The unit under intervention was inside a twentieth-century building built in the second half of the 1950s. The original use was managerial and has now been converted into residential.

The project involved the definition of a new distribution layout that includes a new bathroom, with particular attention paid to the design of a customized furnishing system that requalifies and characterizes the ambience of the house in a specific and particular way.





